

# ADDENDUM NUMBER ONE

February 28, 2019

To all bidders of record for the work titled:

## **Madison School District #321 Middle School HVAC Remodel**

Project Number: 746

Please notify everyone concerned, including suppliers as to the issuance and contents of this Addendum prior to the date of bid opening. This Addendum is a part of the contract documents and modifies them as follows:

This Addendum consists of 4 pages(s) including attached drawing(s).

### **I. GENERAL**

N/A

### **II. SPECIFICATIONS**

A. Add Section 23 6320 – Cooling Coils

B. Prior approvals:

1. 23 0514 – Variable Frequency Drives

Yaskawa

2. 23 2123 – Circulating Pumps and Accessories

Twin City Hose, Taco, Mason Industries, Griswold Controls

3. 23 3114 – Low Pressure Steel Ductwork

Pottorff

4. 23 3115 – Variable Air Volume Boxes

Krueger, Daikin Applied, Anemostat

5. 23 6320 – Cooling Coils

RAE Coils, Daikin Applied, Precision Coils

### **III. DRAWINGS**

A. Replace Sheet A1.3 – Main Level Reflected Ceiling Plan, with attached

B. Replace Sheet E1.1 – Main Plan Lighting Demolition, with Attached

**End of Addendum #1**

## SECTION 23 6320 - COOLING COILS

### PART 1 - GENERAL

#### 1.1 RELATED DOCUMENTS

- A. Drawings, General Provisions of Contract, including General and Supplementary Conditions and other Division 1 Specification Sections, and Section 23 0501 apply to this Section.

#### 1.2 TESTING

- A. All standard coils shall be leak tested at 250 psig air under water.

### PART 2 - PRODUCTS

#### 2.1 MANUFACTURED UNIT

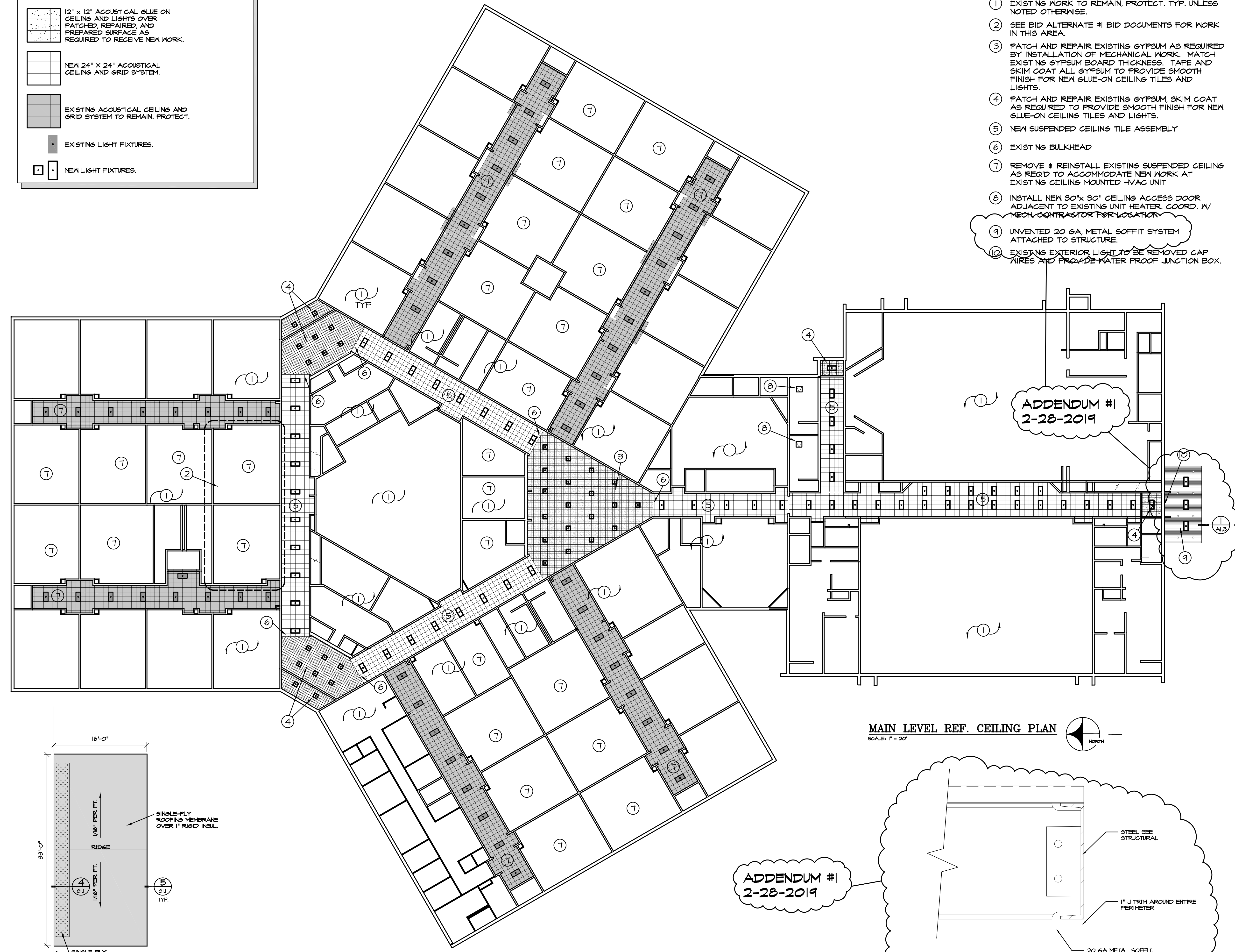
- A. Fins shall be continuous aluminum configured plate-fin type with full fin collars for accurate spacing and maximum fin-tube contact.
- B. Tubes shall be copper expanded into the fin collars for a permanent fin-tube bond and expanded into the header for a leak-tight joint at 250 psig air pressure under water.
- C. Headers shall be gray cast iron hydrostatically tested to 400 psi before assembly.
- D. Casings shall be constructed of 16 gauge, continuous coated galvanized steel with fins recessed into the channels to minimize air bypass. Top and bottom channels shall have 3/8" holes on 3" centers for mounting purposes.
- E. Approved Manufacturers:
  - 1. Trane
  - 2. Dunham-Bush
  - 3. Bohn

**END OF SECTION 23 6320**

CEILING MATERIAL LEGEND	
	12' x 12' ACOUSTICAL GLUE ON CEILING AND LIGHTS OVER PATCHED, REPAIRED, AND PREPARED SURFACE AS REQUIRED TO RECEIVE NEW WORK.
	NEW 24' x 24' ACOUSTICAL CEILING AND GRID SYSTEM.
	EXISTING ACOUSTICAL CEILING AND GRID SYSTEM TO REMAIN, PROTECT.
	EXISTING LIGHT FIXTURES.
	NEW LIGHT FIXTURES.

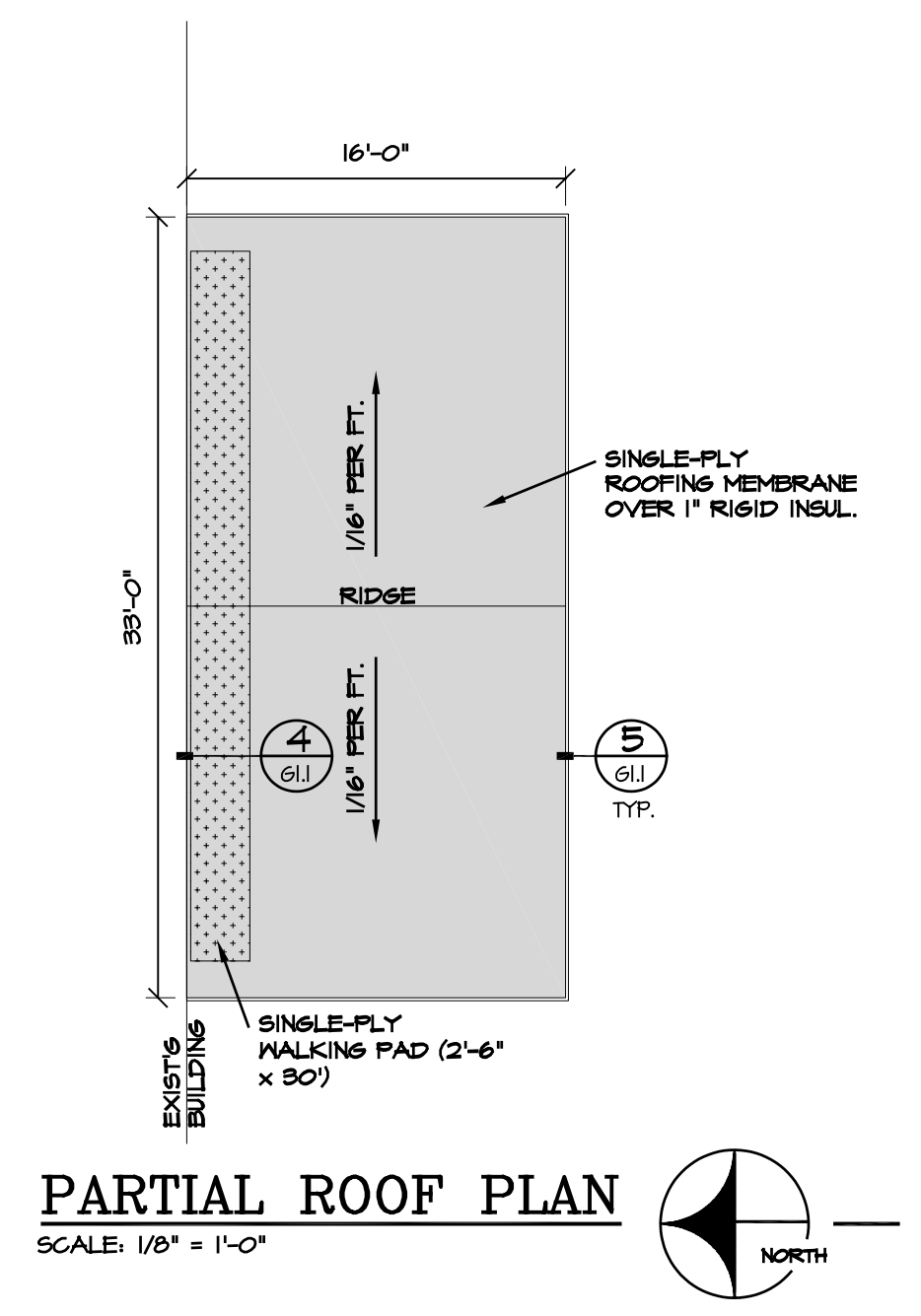
**KEY NOTES**

- ① EXISTING WORK TO REMAIN, PROTECT. TYP. UNLESS NOTED OTHERWISE.
- ② SEE BID ALTERNATE #1 BID DOCUMENTS FOR WORK IN THIS AREA.
- ③ PATCH AND REPAIR EXISTING GYPSUM AS REQUIRED BY INSTALLATION OF MECHANICAL WORK. MATCH EXISTING GYPSUM BOARD THICKNESS. TAPE AND SKIM COAT ALL GYPSUM TO PROVIDE SMOOTH FINISH FOR NEW GLUE-ON CEILING TILES AND LIGHTS.
- ④ PATCH AND REPAIR EXISTING GYPSUM, SKIM COAT AS REQUIRED TO PROVIDE SMOOTH FINISH FOR NEW GLUE-ON CEILING TILES AND LIGHTS.
- ⑤ NEW SUSPENDED CEILING TILE ASSEMBLY
- ⑥ EXISTING BULKHEAD
- ⑦ REMOVE & REINSTALL EXISTING SUSPENDED CEILING AS REQ'D TO ACCOMMODATE NEW WORK AT EXISTING CEILING MOUNTED HVAC UNIT
- ⑧ INSTALL NEW 30"x 30" CEILING ACCESS DOOR ADJACENT TO EXISTING UNIT HEATER. COORD. W/ MECH. CONTRACTOR FOR LOCATION
- ⑨ UNVENTED 20 GA. METAL SOFFIT SYSTEM ATTACHED TO STRUCTURE.
- ⑩ EXISTING EXTERIOR LIGHT TO BE REMOVED CAP WIRES AND PROVIDE WATER PROOF JUNCTION BOX.



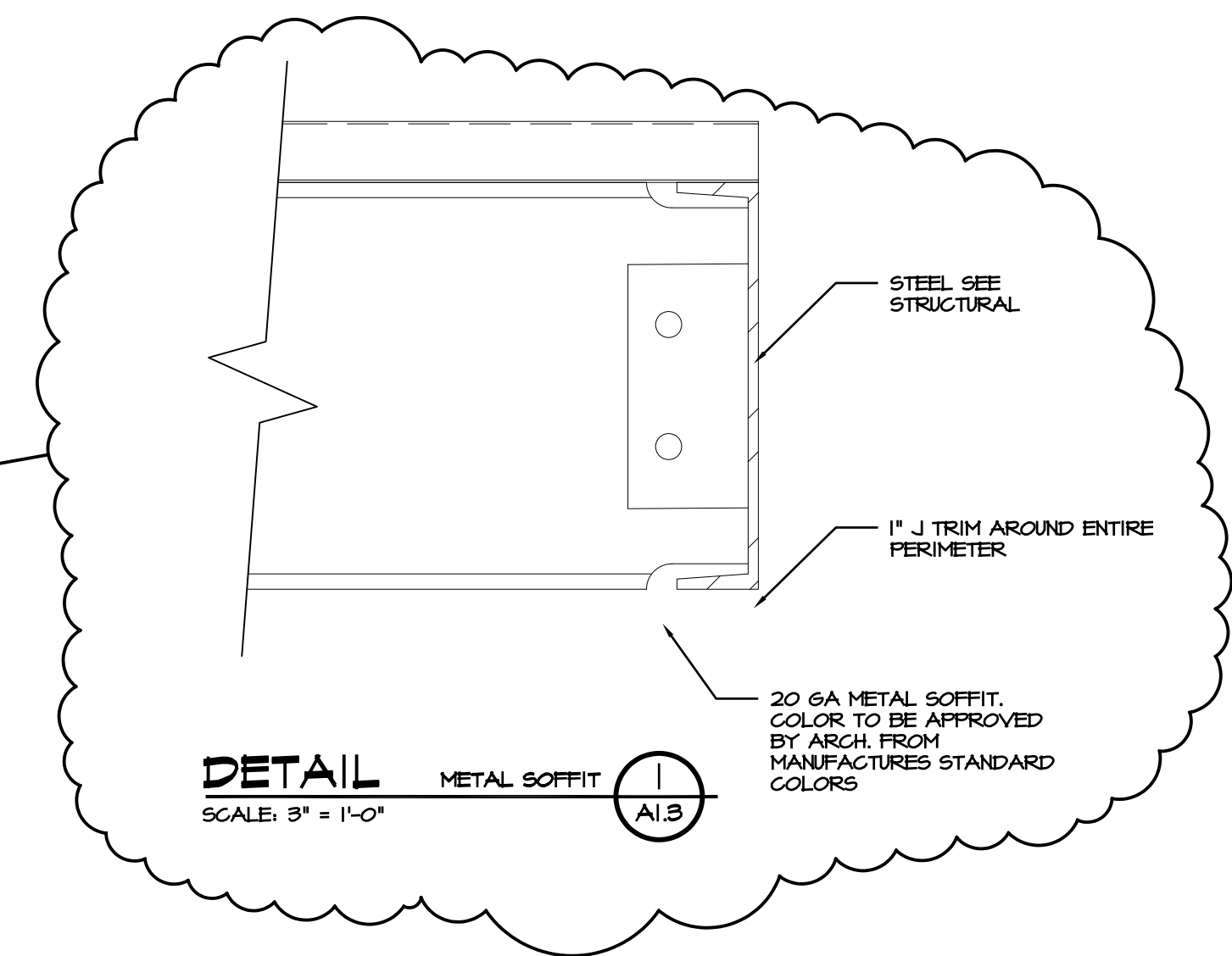
ADDENDUM #1  
2-28-2019

**MAIN LEVEL REF. CEILING PLAN**  
SCALE: 1" = 20'



**PARTIAL ROOF PLAN**  
SCALE: 1/8" = 1'-0"

ADDENDUM #1  
2-28-2019



**DETAIL** METAL SOFFIT  
SCALE: 3" = 1'-0"

© JRV & ASSOCIATES, PLLC. DRAWINGS AND DESIGNS ARE PROTECTED BY COPYRIGHT AND THE ARCHITECT RETAINS TOTAL OWNERSHIP AND CONTROL. ANY UNAUTHORIZED USE OF DRAWINGS, DESIGNS OR IDEAS WITHOUT WRITTEN CONSENT OF THE ARCHITECT ARE PROHIBITED.

BRENT A. MCFARLAND AR-2561  
2/15/2019  
STATE OF IDAHO

**JRV & ASSOCIATES**  
ARCHITECTS  
1155 AVENUE C, SUITE 200, REXBURG, IDAHO 83440  
WWW.JRV.COM PHONE (208) 859-2309 FAX (208) 369-2271

- CONSULTANTS:**
- CONSTRUCTION MANAGING**  
HEADWATERS CONSTRUCTION CO.  
900 Jet Stream Dr.  
Rexburg, Idaho 83440  
(866) 496-9868  
Fax (866) 496-0209
  - STRUCTURAL ENGINEERING**  
FROST STRUCTURAL ENGINEERING  
1020 Lincoln Road  
Idaho Falls, Idaho 83401  
(208) 227-8404  
Fax (208) 227-8405
  - MECHANICAL ENGINEERING**  
ENGINEERED SYSTEMS ASSOC.  
1355 East Center Street  
Pocatello, Idaho 83204  
(208) 233-0501  
Fax (801) 233-0529
  - ELECTRICAL ENGINEERING**  
PAYNE ENGINEERING INC.  
1823 East Center St.  
Pocatello, Idaho 83201  
(208) 232-4439  
Fax (208) 232-1435

PROJECT: MADISON SCHOOL DISTRICT #321  
MIDDLE SCHOOL HVAC REMODEL  
REXBURG, IDAHO

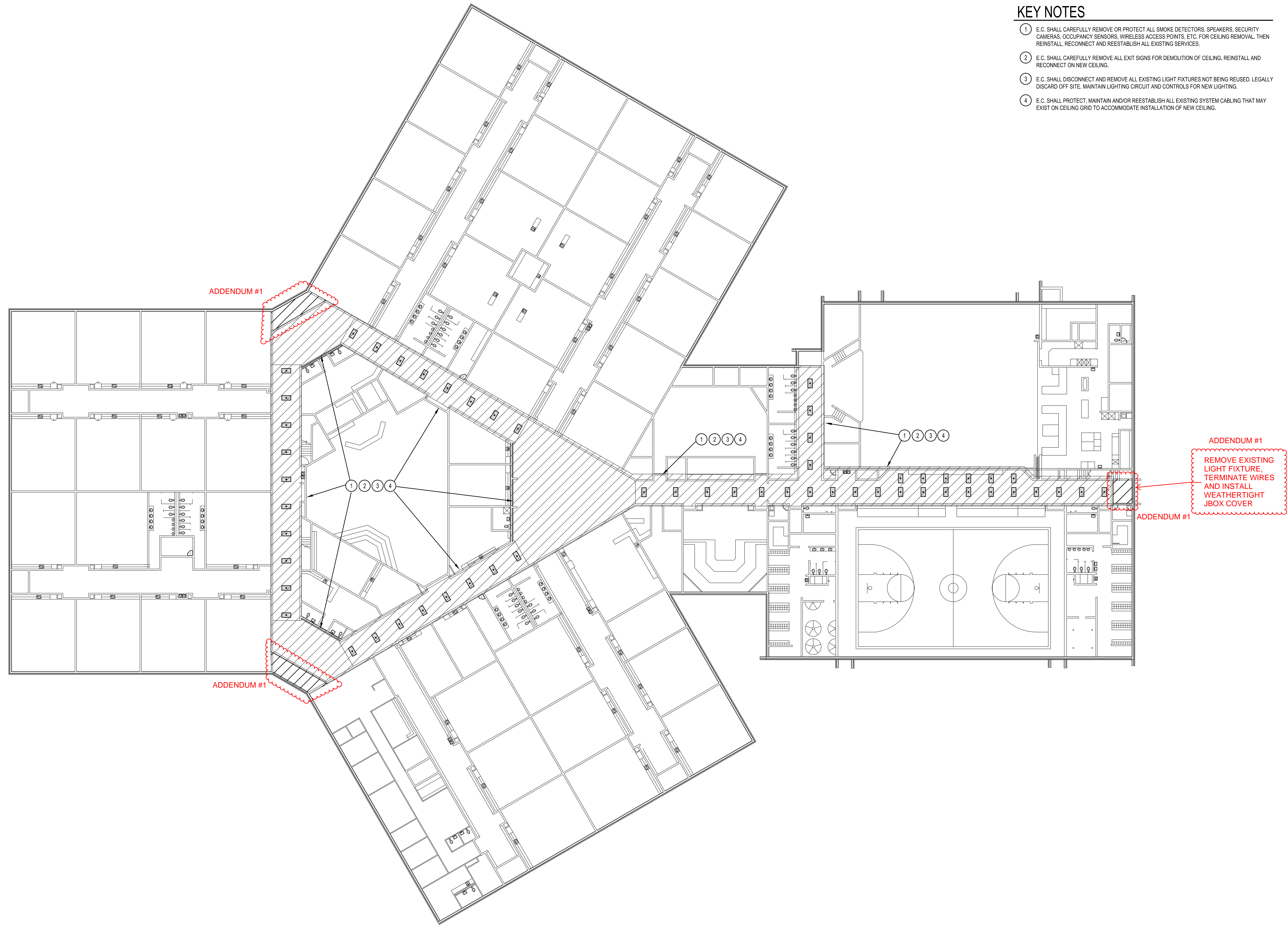
DRAWING TITLE: MAIN LEVEL REF. CEILING PLAN

REVISION:	
#1	2-28-19 ADD #1
DRAWN BY:	JRV
CHECKED BY:	BAM
JOB NO:	746
DATE:	FEB '19
PLOT DATE: 2-28-19	

DRAWING NO.  
FILE: 746-A1.3-MRCP - A1.3  
**A1.3**  
OF 4

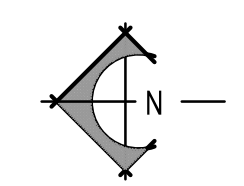
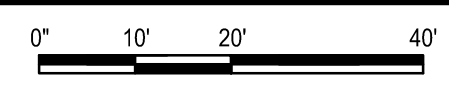
**KEY NOTES**

- 1 E.C. SHALL CAREFULLY REMOVE OR PROTECT ALL SMOKE DETECTORS, SPEAKERS, SECURITY CAMERAS, OCCUPANCY SENSORS, WIRELESS ACCESS POINTS, ETC. FOR CEILING REMOVAL. THEN REINSTALL, RECONNECT AND REESTABLISH ALL EXISTING SERVICES.
- 2 E.C. SHALL CAREFULLY REMOVE ALL EXIT SIGNS FOR DEMOLITION OF CEILING. REINSTALL AND RECONNECT ON NEW CEILING.
- 3 E.C. SHALL DISCONNECT AND REMOVE ALL EXISTING LIGHT FIXTURES NOT BEING REUSED. LEGALLY DISCARD OFF SITE. MAINTAIN LIGHTING CIRCUIT AND CONTROLS FOR NEW LIGHTING.
- 4 E.C. SHALL PROTECT, MAINTAIN AND/OR REESTABLISH ALL EXISTING SYSTEM CABLING THAT MAY EXIST ON CEILING GRID TO ACCOMMODATE INSTALLATION OF NEW CEILING.

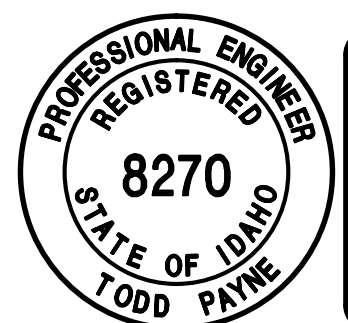


**MAIN PLAN - CEILING DEMOLITION**

SCALE: 1" = 20' - 0"



ORIGINAL SIGNED BY:  
TODD E. PAYNE  
DATED ORIGINAL SIGNED:  
2-14-2019  
ON FILE AT:  
PAYNE ENGINEERING INC.



P.E. JOB #1903

**IPAYNE**  
Engineering Inc. Consulting Engineers  
1823 E. Center  
Pocatello, Idaho 83201  
tel (208) 232-4439 fax (208) 232-1435

PROJECT: **MADISON MIDDLE SCHOOL AC**  
MADISON COUNTY SCHOOL DISTRICT #321  
REXBURG, IDAHO  
DRAWING TITLE: **MAIN PLAN LIGHTING DEMOLITION**

REVISION:	
1	2/27/19 Addendum #1

DRAWN BY: MMP	JOB NO: 
CHECKED BY: TEP	DATE: FEB '19
PLOT DATE: 2-14-19	

DRAWING NO.  
**E1.1**  
OF